

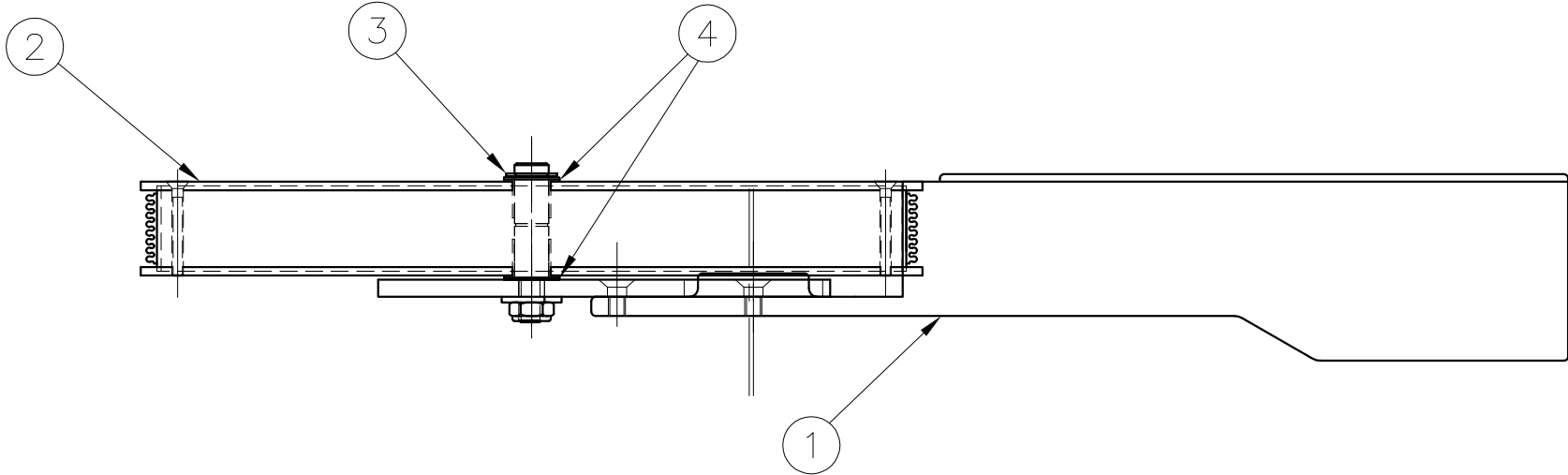
**REPLACEMENT OR
ADDITIONAL MANUALS
AVAILABLE AT
EXTRA COST.**

**KIWI CODERS CORPORATION
36 INCH CUSTOM FRICTION CODER**

KIWI CODERS CORPORATION - 265 E. MESSNER DRIVE, WHEELING, IL 60090-6495 USA
PHONE: 847-541-4511 FAX: 847-541-6332
E-MAIL: info@kiwicoders.com INTERNET: www.kiwicoders.com


**GIVE SERIAL NUMBER OF YOUR PRINTER WHEN ORDERING PARTS.
ORDER PARTS BY FULL DESCRIPTION AND PART NUMBER.**

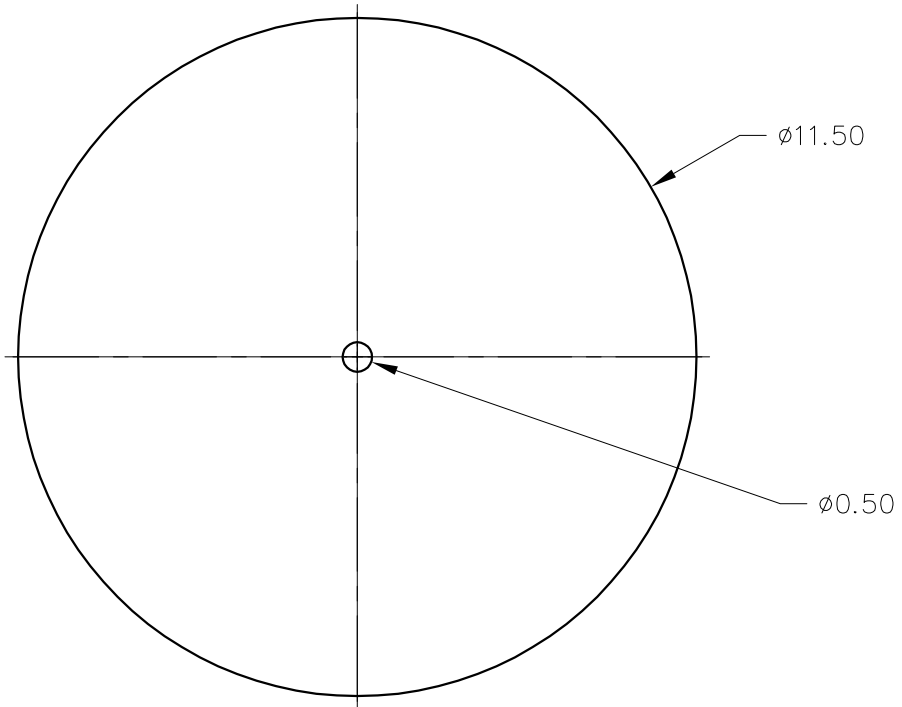
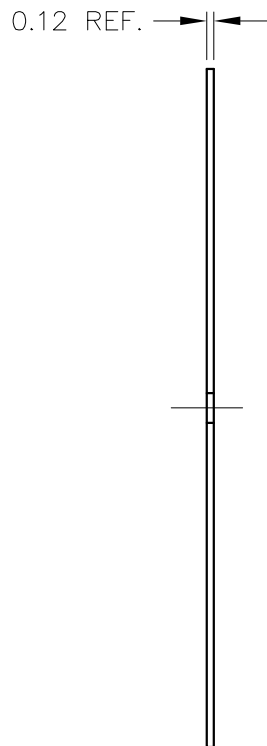
THIN WASHERS TO BE INSTALLED BETWEEN ADAPTER PLATE AND NYLINER BUSHING
AND BETWEEN RETAINING RING AND NYLINER BUSHING.



BILL OF MATERIALS

ITEM	DESCRIPTION	PART NO.	QTY
1	HOUSING ASSEMBLY	FC38190	1
2	MARKING WHEEL ASSEMBLY	FC38194	1
3	RETAINING RING – 1/2 DIA. EXTERNAL	F011152	1
4	1/2 DIA. THIN WASHER	F037021	2

	KIWI CODERS CORPORATION 265 E. MESSNER DR. WHEELING, IL. 60090								
	TITLE ASSEMBLY 36" CIRC CUSTOM CODER (BASED ON MODEL 450)								
SCALE NTS	DATE 5/8/01	DRN BY KW							
TOLERANCES UNLESS OTHERWISE SPECIFIED: <table border="0" style="font-size: small;"> <tr> <td>dec .00</td> <td>+ -.015</td> </tr> <tr> <td>dec .000</td> <td>+-.005</td> </tr> <tr> <td>ang</td> <td>+ - 1/2 deg</td> </tr> </table>	dec .00	+ -.015	dec .000	+-.005	ang	+ - 1/2 deg	DWG B038184	REV	
dec .00	+ -.015								
dec .000	+-.005								
ang	+ - 1/2 deg								



KIWI CODERS CORPORATION
 265 E. MESSNER DR.
 WHEELING, IL. 60090

TITLE SIDE PLATE – BURN–OUT
 FOR 36” CIRC.
 CUSTOM CODER

SCALE NTS

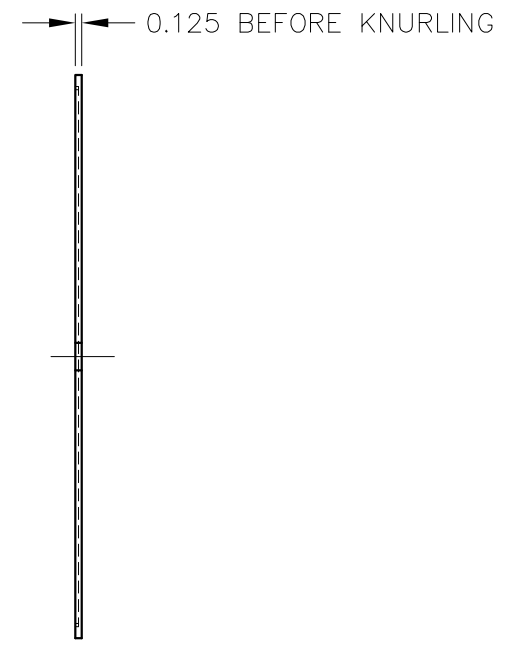
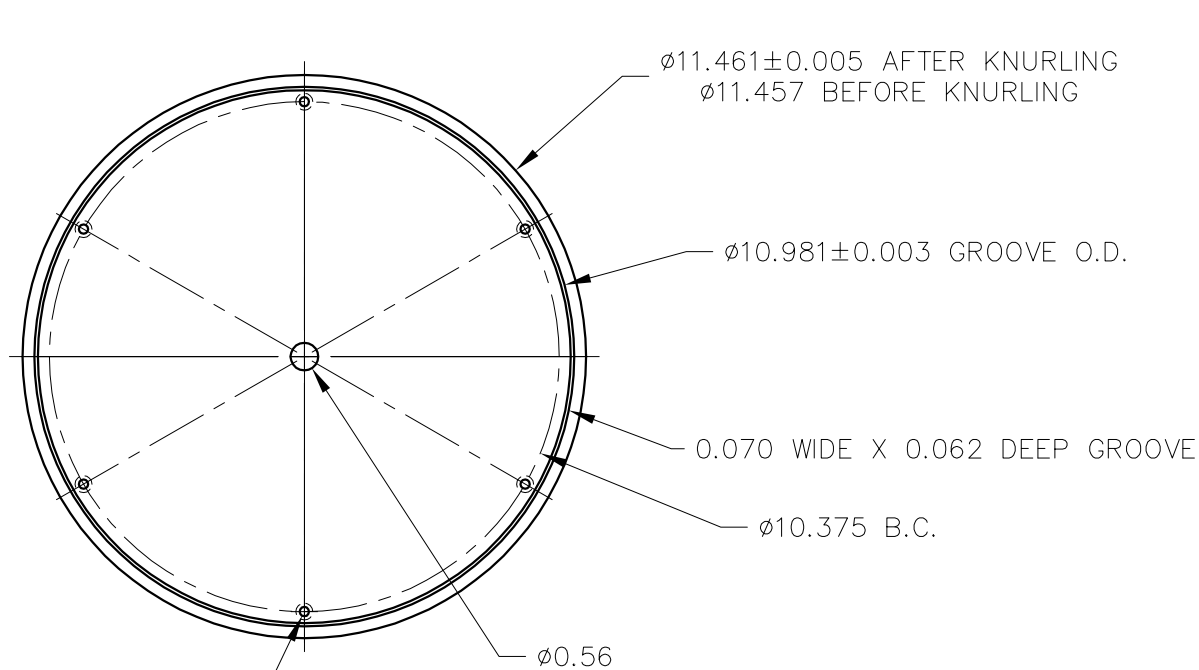
DATE 4/10/01

DRN BY KW


TOLERANCES UNLESS OTHERWISE SPECIFIED: dec .00 + -.015
 dec .000+-.005
 ang +- 1/2 deg

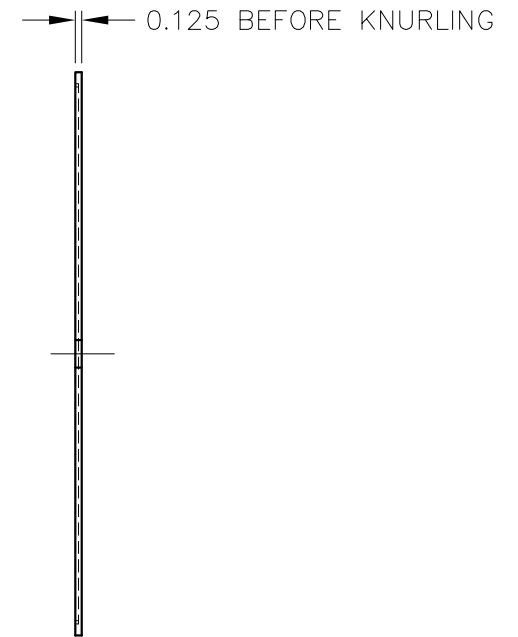
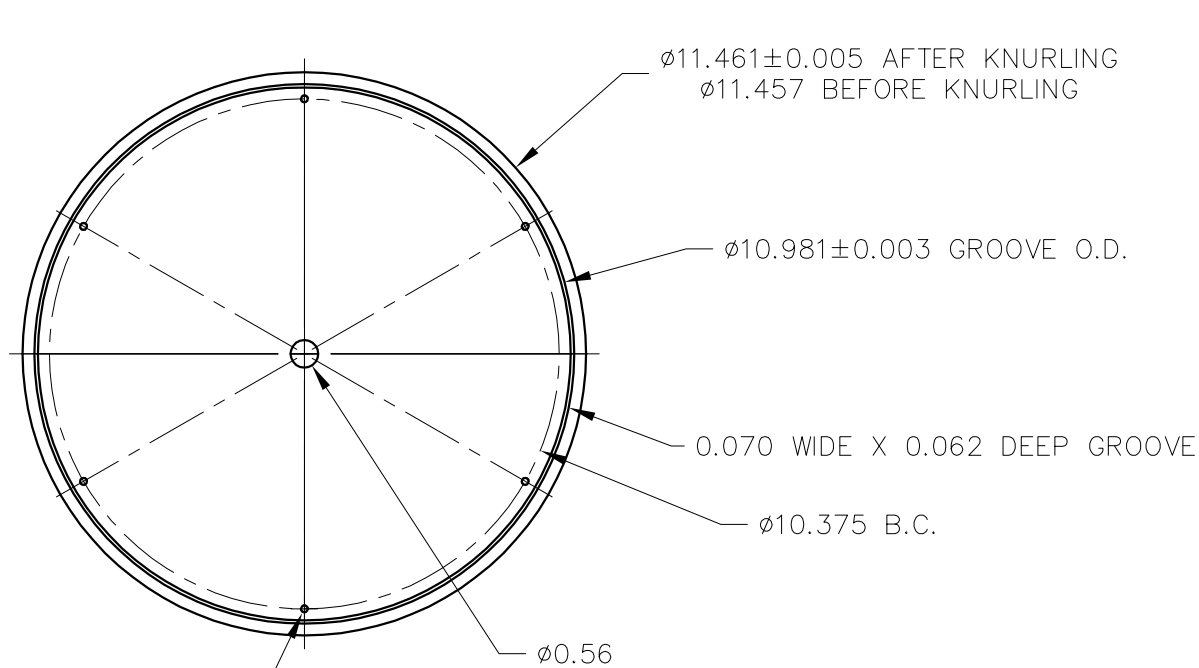
DWG FC38186

REV



$\phi 0.19$ DRILL THRU
 $\phi 0.343$ X 82° C'SINK (FAR SIDE)
 6 HOLES EQUALLY SPACED
 ON A $\phi 10.375$ B.C.

		KIWI CODERS CORPORATION 265 E. MESSNER DR. WHEELING, IL. 60090			
		TITLE KNURLED SIDE PLATE WITH C'SUNK HOLES 36" CIRC. CUSTOM CODER			
SCALE	NTS	DATE	4/30/01	DRN BY	KW
TOLERANCES UNLESS OTHERWISE SPECIFIED:		dec .00 + -.015 dec .000 + -.005 ang +- 1/2 deg	DWG	FC38187	REV



#8-32 TAP THRU
6 HOLES EQUALLY SPACED
ON A $\phi 10.375$ B.C.

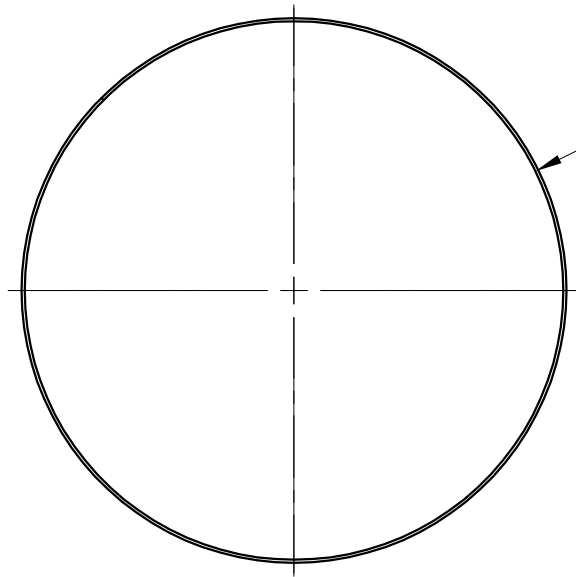


KIWI CODERS CORPORATION
265 E. MESSNER DR.
WHEELING, IL. 60090

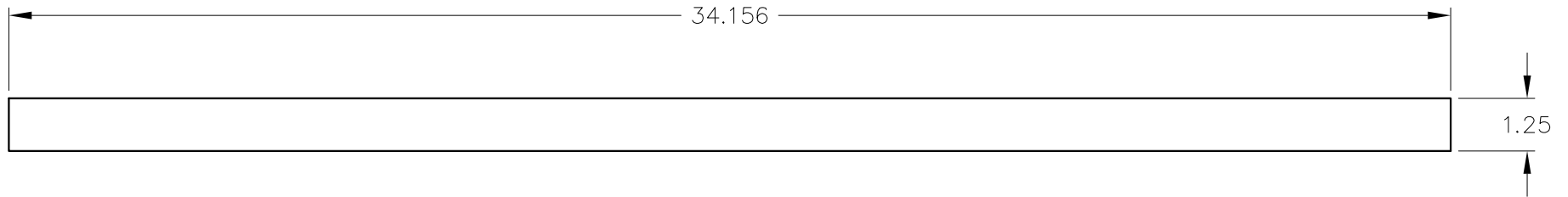
TITLE KNURLED SIDE PLATE
WITH TAPPED HOLES
36" CIRC. CUSTOM CODER

SCALE	NTS	DATE	4/30/01	DRN BY	KW
-------	-----	------	---------	--------	----

TOLERANCES UNLESS OTHERWISE SPECIFIED:	dec .00 + -.015 dec .000 + -.005 ang +- 1/2 deg	DWG	FC38188	REV
--	---	-----	---------	-----



CURVE STRIP TO
10.981 O.D.



KIWI CODERS CORPORATION
265 E. MESSNER DR.
WHEELING, IL. 60090

TITLE MARKING WHEEL BODY
36 CIRC CUSTOM CODER

SCALE NTS DATE 5/7/01 DRN BY KW

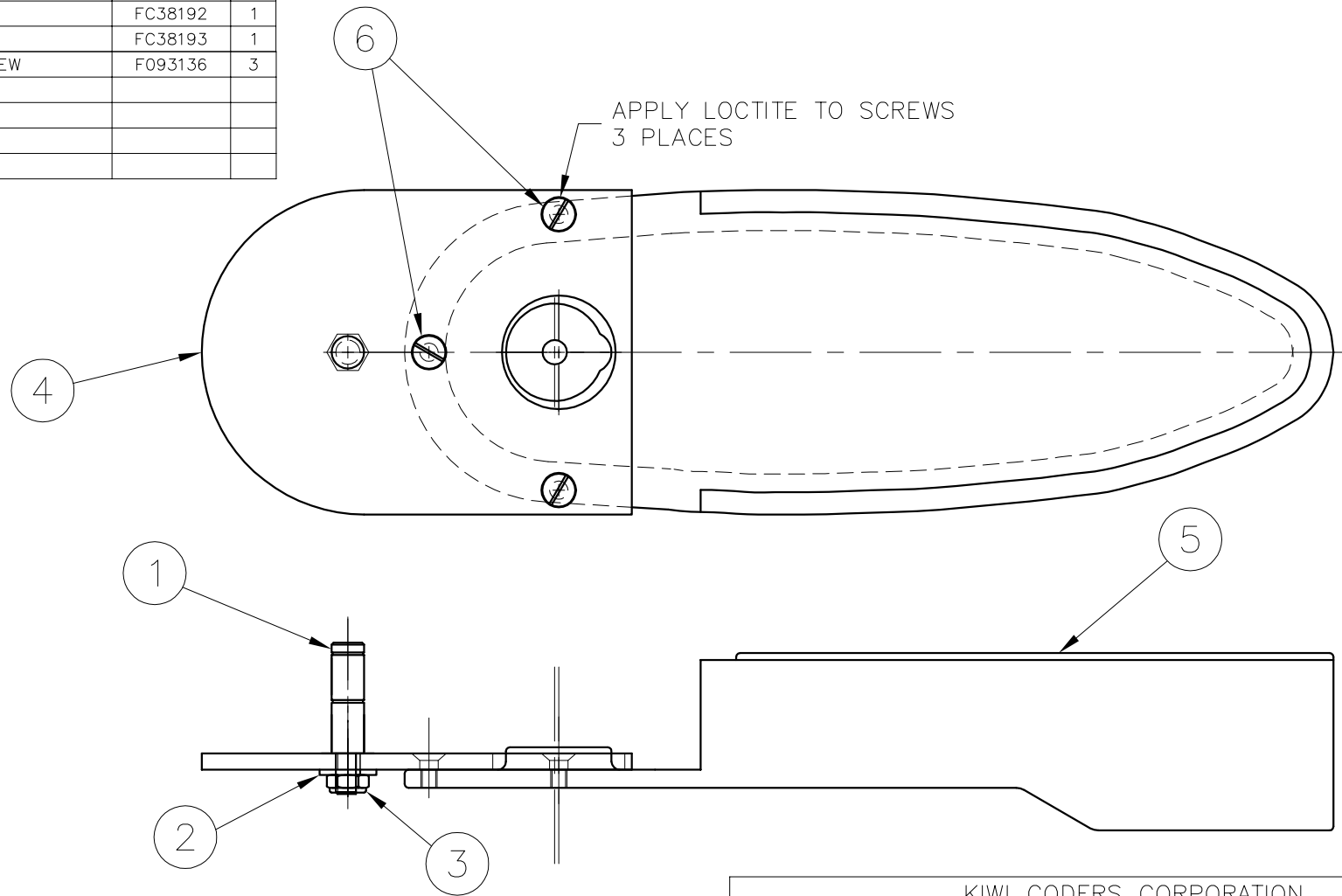
TOLERANCES UNLESS OTHERWISE SPECIFIED: dec .00 + -.015
dec .000 + -.005
ang +- 1/2 deg

DWG FC38189

REV

BILL OF MATERIALS

ITEM	DESCRIPTION	PART NO.	QTY
1	MARKING WHEEL AXLE	FC38191	1
2	3/8 DIA. THICK WASHER	F035111	1
3	3/8-16 ESNA NUT	F037018	1
4	ADAPTER PLATE	FC38192	1
5	MODIFIED HOUSING	FC38193	1
6	1/4-20 X 5/8 LG. FLAT HEAD SCREW	F093136	3

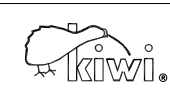
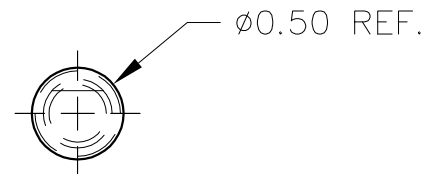
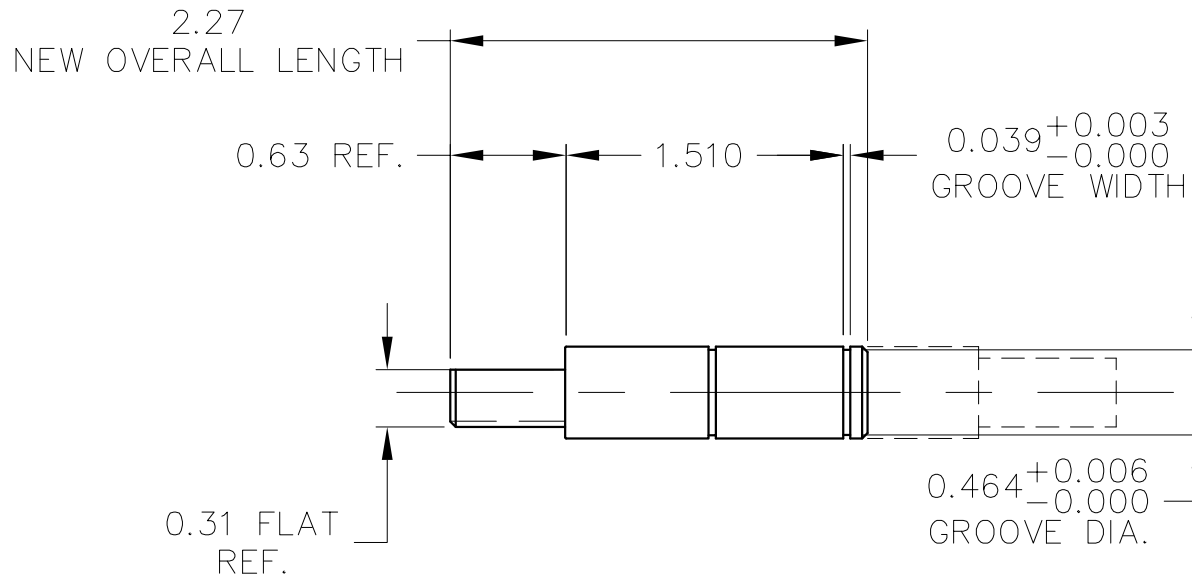


KIWI CODERS CORPORATION
265 E. MESSNER DR.
WHEELING, IL. 60090

TITLE HOUSING ASSEMBLY
FOR 36 CIRC CUSTOM CODER
BASED ON SERIES 450

SCALE HALF DATE 5/8/01 DRN BY KW

TOLERANCES UNLESS OTHERWISE SPECIFIED: dec .00 + -.015
dec .000+-.005
ang +- 1/2 deg DWG FC38190 REV

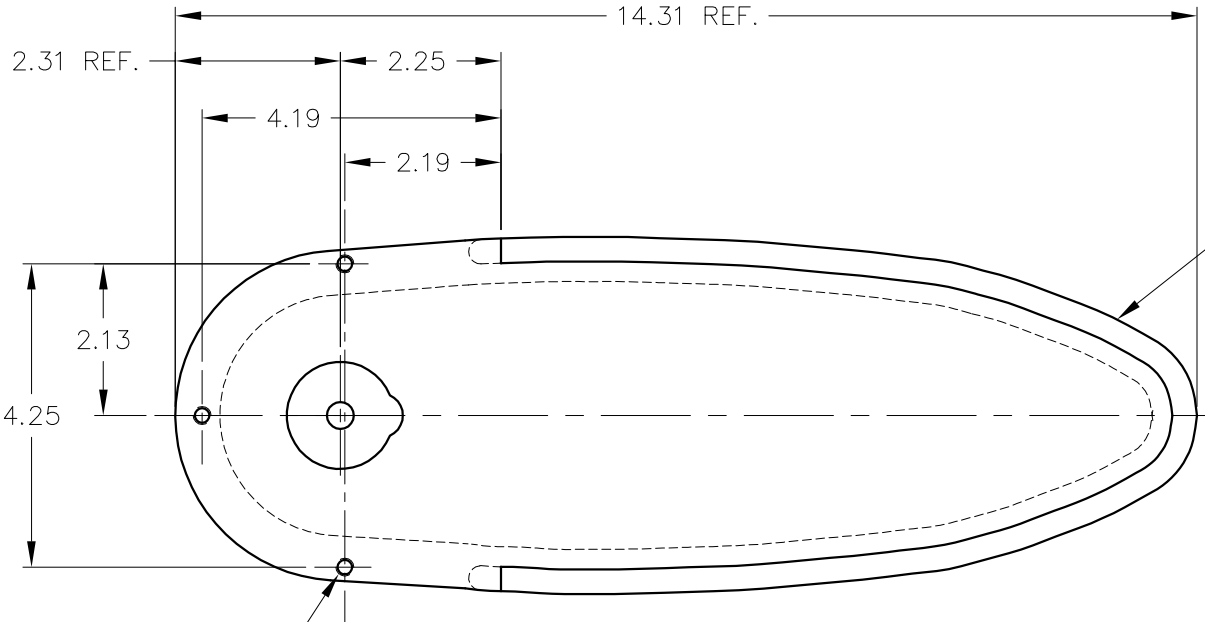


KIWI CODERS CORPORATION
265 E. MESSNER DR.
WHEELING, IL. 60090

TITLE AXLE — MARKING WHEEL
(MODIFIED 452 AXLE)
FOR 36" CIRC CUSTOM CODER

SCALE FULL	DATE 5/7/01	DRN BY KW
------------	-------------	-----------

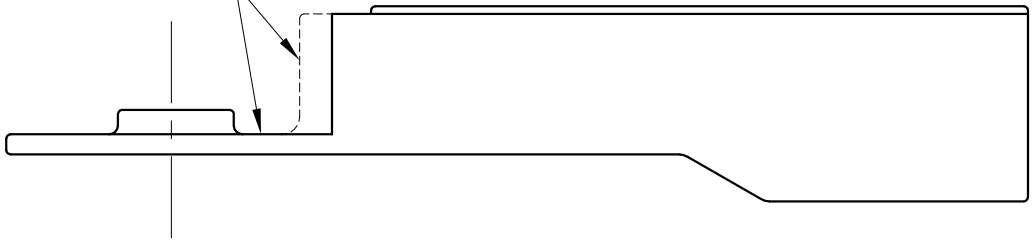
TOLERANCES UNLESS OTHERWISE SPECIFIED:	dec .00 + -.015 dec .000 + -.005 ang +/- 1/2 deg	DWG FC38191	REV
--	--	-------------	-----



MACHINED HOUSING F038101

1/4-20 TAP THRU
3 HOLES

MILL OUT CASTING IN THIS AREA TO DIMENSION SHOWN
AND FLUSH WITH CASTING SURFACE.

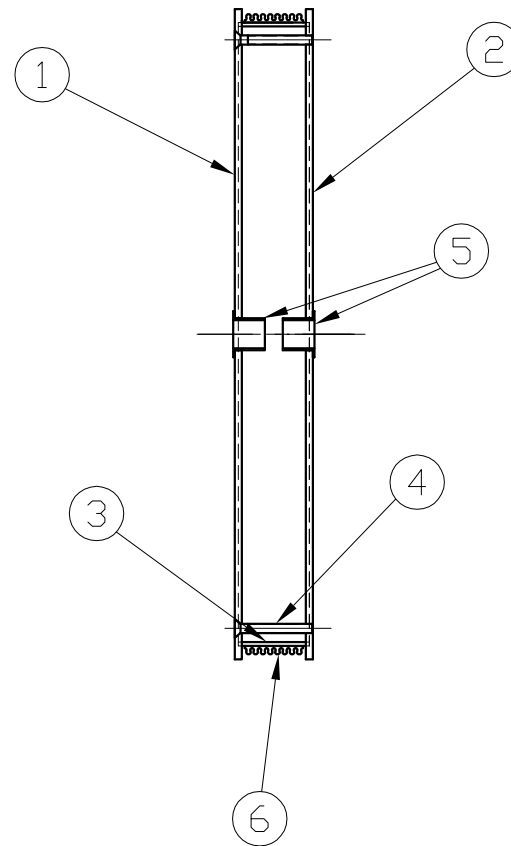
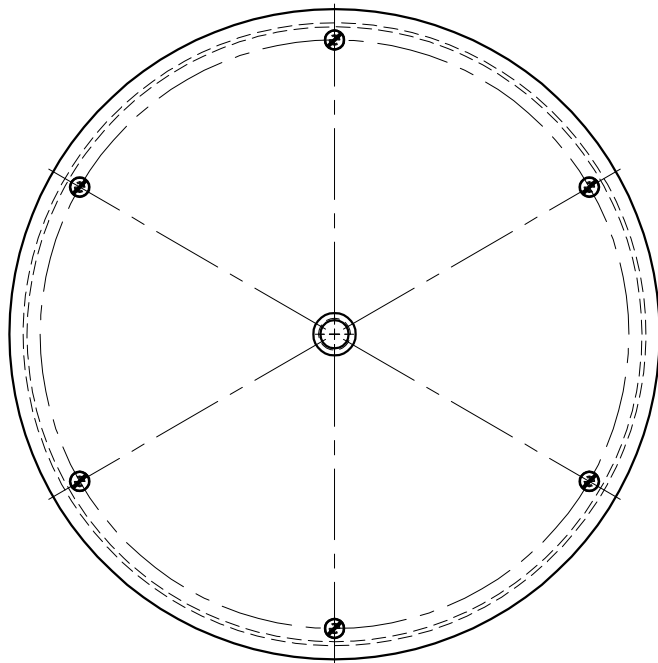


KIWI CODERS CORPORATION
265 E. MESSNER DR.
WHEELING, IL. 60090

TITLE HOUSING MODIFICATION
FOR 36 CIRC CUSTOM CODER
BASED ON SERIES 450

SCALE HALF	DATE 4/20/01	DRN BY KW
------------	--------------	-----------

TOLERANCES UNLESS OTHERWISE SPECIFIED:	dec .00 + -.015 dec .000 + -.005 ang +- 1/2 deg	DWG FC38193	REV
--	---	-------------	-----



BILL OF MATERIALS

ITEM	DESCRIPTION	PART NO.	QTY
1	KNURLED SIDE PLATE - C'SUNK	FC38187	1
2	KNURLED SIDE PLATE - TAPPED	FC38188	1
3	PRINT WHEEL BODY	FC38189	1
4	MODIFIED SCREW - #8-32 X 1-1/4	FC38196	6
5	NYLINER BUSHING	F036954	2
6	BASELOCK BAND - 8 RIBS	FC38195	1

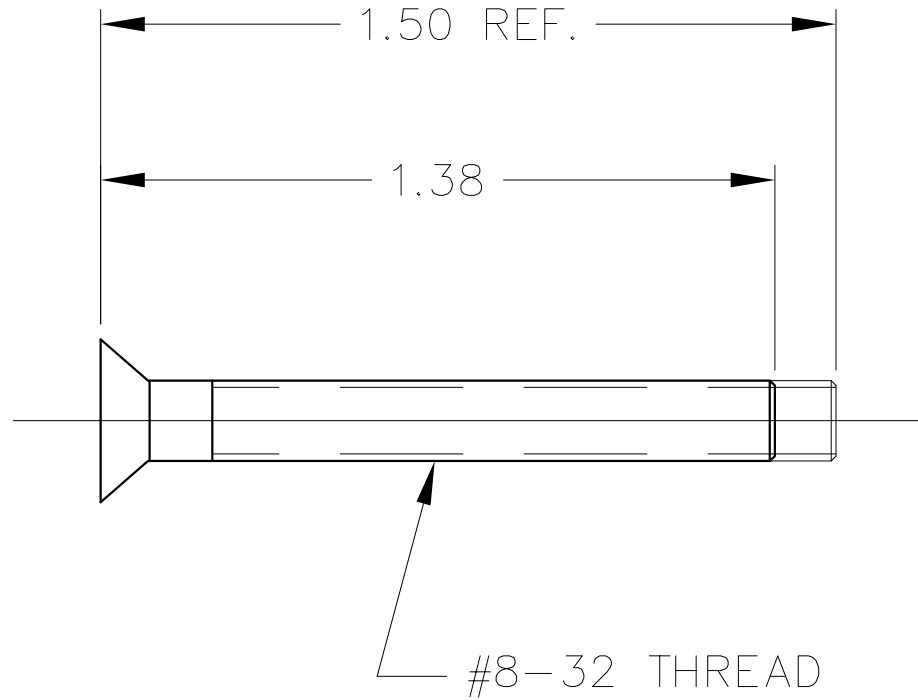
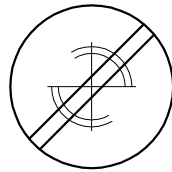


KIWI CODERS CORPORATION
265 E. MESSNER DR.
WHEELING, ILL. 60090

TITLE MARKING WHEEL ASSEMBLY
36" CIRC CUSTOM CODER
(BASED ON MODEL 450)

SCALE NTS DATE 5/8/01 DRN BY KW

TOLERANCES UNLESS OTHERWISE SPECIFIED: dec .00 + -.015
dec .000 + -.005
ang +/- 1/2 deg DWG FC38194 REV



KIWI CODERS CORPORATION
265 E. MESSNER DR.
WHEELING, IL. 60090

TITLE
MODIFIED SCREW
#8-32 X 1-3/8 LG.

SCALE	2X	DATE	5/8/01	DRN BY	KW
-------	----	------	--------	--------	----

TOLERANCES UNLESS OTHERWISE SPECIFIED:	dec .00 + -.015	dec .000 + -.005	ang +- 1/2 deg	DWG	FC38196	REV
--	-----------------	------------------	----------------	-----	---------	-----