

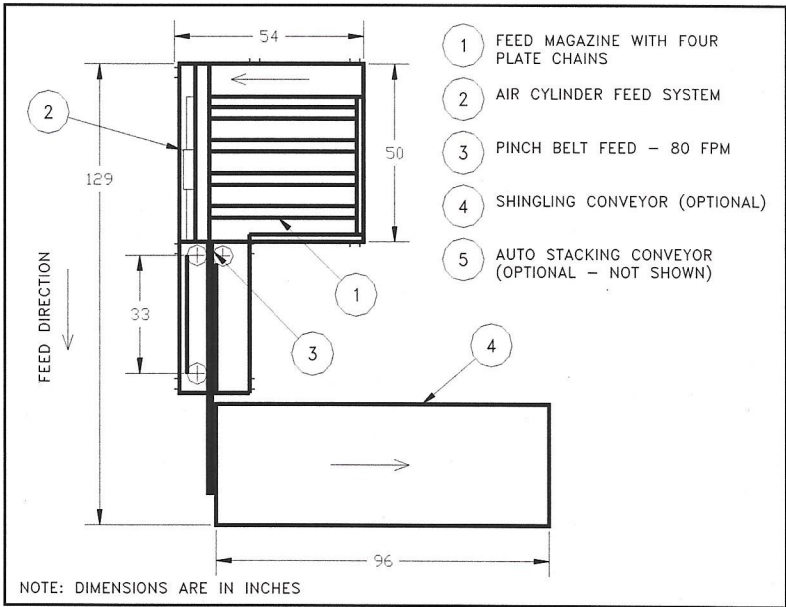
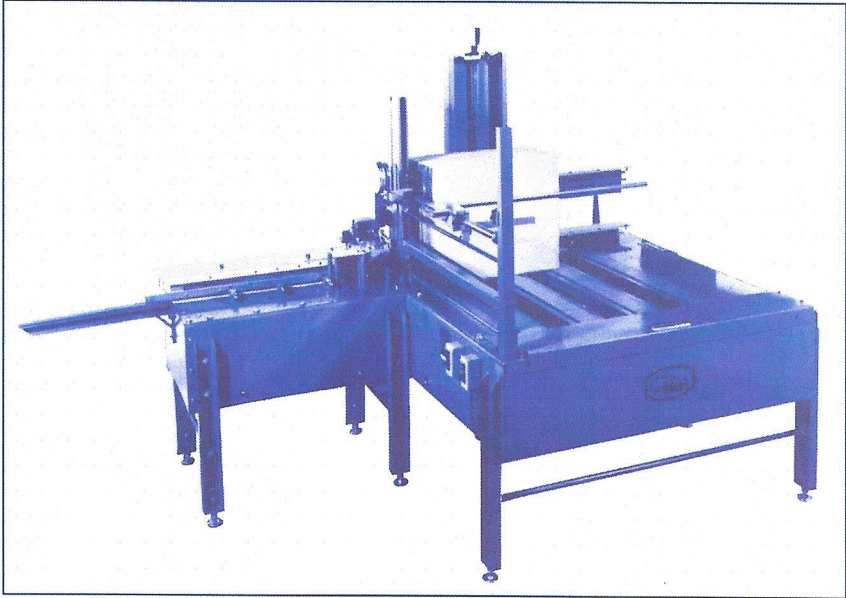


MODEL 2512 VERTICAL FLAT CASE TRANSPORT

The perfect off-line solution for automatically feeding corrugated cases when using non-contact **ink jet systems, label applicators or RFID'S**. Access both sides of a carton (all four panels) in a single pass.

SPECIFICATIONS:

- Case sizes: Min- 12" long x 12" high
Max- 44" long x 36" high
(custom sizes available on review of application).
- Input: Hopper fed-continuous
- Finish: Kiwi Blue
- Shipping weight: 1400 lbs.
- Carrier: Air cylinder operated feed with bottom belt pinch drive.
- Height of discharge from floor: 30" discharge height (optional heights available).
- Power requirements: Air- 60 PSI;
Electrical- 120V AC, 1PH, 60 Hz, 6 AMPS.
- Air consumption: 4.2 SCFM at 40/m
- Available Options:
Model SC Auto Stacker Conveyor



Output: shown in cases/minute.

Flat case length	Approx. output/ cases per min
12" - 23"	40
24"	38
28"	33
32"	30
36"	27
40"	24
44"	22

*For larger sizes, please consult factory

Kiwi Coders Corporation, 265 E. Messner Dr. Wheeling, IL 60090 USA
 847-541-4511 (phone) 847-541-6332 (fax)
 e-mail: info@kiwicoders.com Website: www.kiwicoders.com

Bulletin 341A